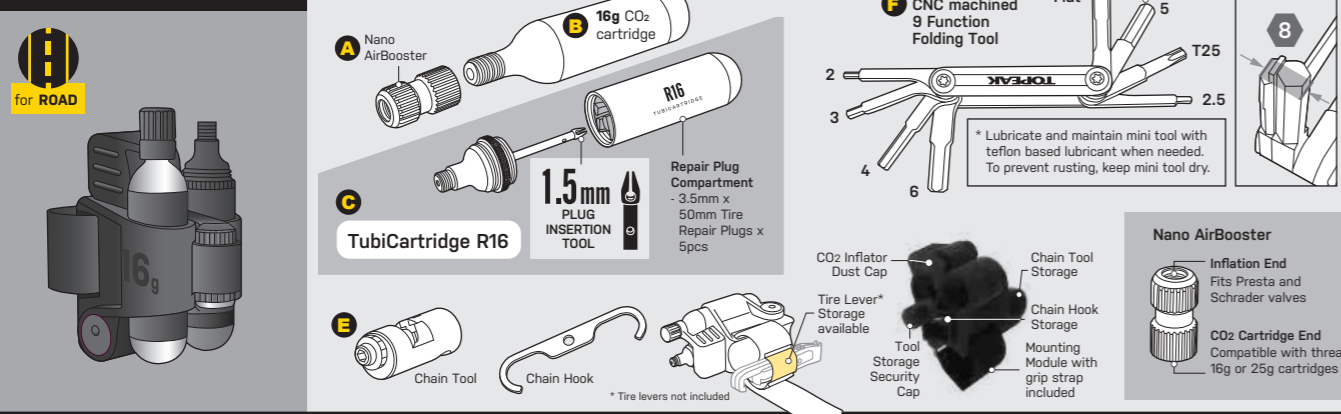
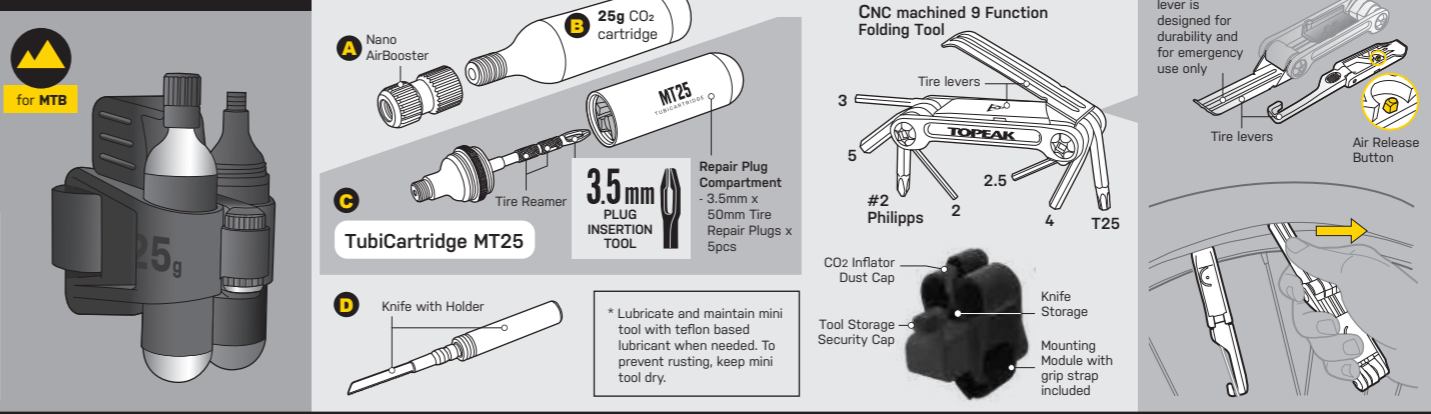


TUBIMASTER RXT PRO



TUBIMASTER MXT



EN DE FR ES IT
PL JP KR CH

Multiple Mounting Options



HOW TO USE NANO AIRBOOSTER

VERWENDUNG DES NANO AIRBOOSTER / COMMENT UTILISER LE NANO AIRBOOSTER / COMO USAR NANO AIRBOOSTER / COME UTILIZZARE NANO AIRBOOSTER / JAK UŻYWAĆ NANO AIRBOOSTER / ナノエアブースターの使用方法 / NANO AIRBOOSTER 사용법 / 如何操作NANO AIRBOOSTER

A + B Inflation

Thread in CO2 cartridge

Presta Valve

Loosen valve core before inflation

Install and thread inflation head onto Schrader valve

Schrader Valve

Thread in CO2 cartridge

C Start & regulate CO2 flow by 1/2 turn to release CO2

Stop the CO2 flow by tightening the CO2 cartridge into Nano AirBooster

WARNING / WARNUNG / AVERTISSEMENT / ATENCIÓN / ATTENZIONE / OSTRZEŻENIE / 警告 / 경 고 / 警告

When threading CO2 cartridge into Nano AirBooster, a small amount of CO2 gas will eject momentarily

Completely discharge the CO2 cartridge after inflating the tire

IMPORTANT NOTE / WICHTIGER HINWEIS / NOTE IMPORTANTE / NOTA IMPORTANTE / IMPORTANTI / WAŻNE / 重要 / 중요한 알림사항 / 注意

Make sure air flows properly before inflating

Schrader Valve

Presta Valve

TUBELESS TIRE REPAIR

REPARATUR VON TUBELESS-REIFEN / RÉPARATION PNEU TUBELESS / REPARACIÓN DE NEUMÁTICOS TUBELESS / RIPARAZIONE DELLE COPERTURE TUBELESS / NAPRAWA OPON BEZDĘTKOWYCH / チューブレスタイヤのパンク修理方法 / 튜블리스 타이어 수리 방법 / 無内胎輪胎補胎 / 无内胎輪胎補胎

Use the Reamer to roughen the area around the hole before repair

3.5mm Plug Insertion Tool

1.5mm Plug Insertion Tool

Insert a repair plug through slot of the Plug Tool

Insert Plug Tool into the puncture with 10-15mm of the repair plug ends remaining outside of tire

Make sure to hold the repair plug while extracting the Plug Tool from puncture to prevent accidental removal of the repair plug

Extract Plug Tool

REPAIR AND DIRECT INFLATE

REPARATUR MIT DIREKTEM BEFÜLLEN / RÉPARATION / REGONFLAGE INSTANTANÉ / REPARACIÓN / INFLADO DIRECTO / RIPARAZIONE / GONFIAGGIO DIRETTO / NAPRAWA / BEZPOŚREDNIE POMPOWANIE / パンク修理 / 空気の充填方法 / 수리 / 직접 공기 주입 방법 / 補胎 / 直接充氣 / 补胎 / 直接充氣

Insert a repair plug through slot of the Plug Tool

Insert Plug Tool into the puncture with 10-15mm of the repair plug ends remaining outside of tire

Remove cover

Install CO2 inflator and CO2 Cartridge for direct inflation (See above section on How to Use Nano Booster)

Nano AirBooster

CO2 cartridge

IMPORTANT NOTE / WICHTIGE HINWEISE / NOTE IMPORTANTE / NOTA IMPORTANTE / NOTE IMPORTANTI / WAŻNE / 重要 / 중요한 알림사항 / 注意

Due to the cold CO2 inflation, the repair plug will harden and it will be difficult to remove the Plug Tool. Wait 2 minutes for the repair plug to soften, then remove the Plug Tool

Trim repair plug excess

D

